



US Army Corps  
of Engineers  
Memphis District

# Osceola Harbor Extension, AR

Section 107 of the River and Harbor Act of 1960, as amended

## Continuing Authority Program (CAP)

**ASA(CW) Initiative:** Enabling Economic Activity

**MVD Command Priorities:** Inland Navigation, including harbors

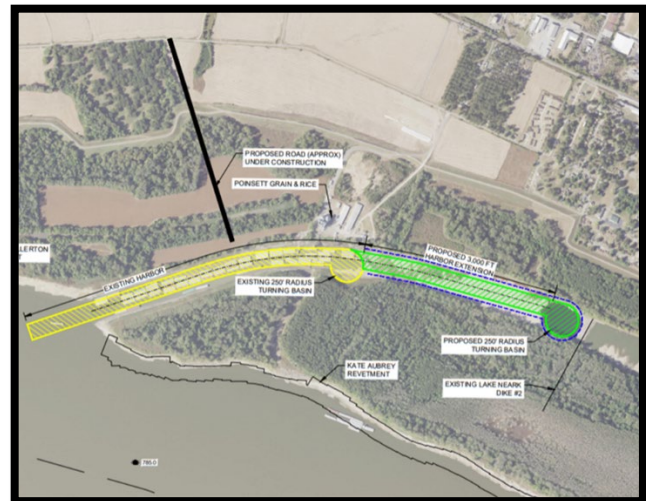
**P2 Number:** 518521

**Location:** This project is located at Mississippi River Mile 785 on the right descending bank near Osceola, Arkansas.

**Description:** This project will extend the the harbor existing federal navigation channel at the harbor by 3,000 feet. The current harbor provides a 6,600-foot-long shallow draft harbor dredged to a depth of 9-feet and a width of 250-feet with a 250-foot radius-turning basin. The 5-year average commercial tonnage is 572 thousand tons.

**Importance:** The Osceola Harbor supports both agricultural exports and a rapidly expanding domestic steel manufacturing hub transforming eastern Arkansas into one of the Nation's leading steel-producing regions. The harbor currently accommodates approximately 500,000 tons of grain annually; however, industrial expansion is projected to increase traffic to 5.5 million tons of steel each year. Recent private investment highlights the national significance of the project. Hybar LLC opened a \$700 million steel rebar facility in Osceola, and U.S. Steel announced plans to invest \$11 billion in domestic operations by 2028, supporting more than 4,700 regional jobs, including 900 new direct positions. Harbor congestion threatened navigation efficiency and risked constraining continued industrial growth and economic development. Completed in DEC 2025, the feasibility report recommended a 3,000-foot harbor extension with a second turning basin, achieving a Benefit-to-Cost Ratio (BCR) of 11.7 and demonstrating exceptional economic return aligned with national infrastructure priorities.

**Future Activities:** The Corps will construct the harbor extension with the \$6.5M provided via Community Directed Spending in the 2026 Energy and Water Appropriations and the cost shared contribution from the local sponsor..



**Partner:** City of Osceola, AR

**Congressional Interest:**

Senate: Cotton (AR) and Boozman (AR).

House: Crawford (AR-1).